

Hardware-Übersicht:

| | |
|---------------------------|------------------|
| Modellname: | MacBook Pro 17" |
| Modell-Identifizierung: | MacBookPro2,1 |
| Prozessortyp: | Intel Core 2 Duo |
| Prozessorgeschwindigkeit: | 2.33 GHz |
| Anzahl der Prozessoren: | 1 |
| Gesamtzahl der Kerne: | 2 |
| L2-Cache (pro Prozessor): | 4 MB |
| Speicher: | 2 GB |
| Busgeschwindigkeit: | 667 MHz |
| Boot-ROM-Version: | MBP21.00A5.B01 |
| SMC Version: | 1.14f5 |

Software-Übersicht:

Überblick über die Systemsoftware:

| | |
|-----------------|---------------------------|
| Systemversion: | Mac OS X 10.4.10 (8R2218) |
| Kernel-Version: | Darwin 8.10.1 |
| Startvolume: | alf_mobil_intel |
| Gerätename: | alf_intel |
| Benutzername: | alf |

Parallels Desktop:

| | |
|-------------------|--|
| Version: | 2.5 |
| Zuletzt geändert: | 10.01.07 15:13 |
| Art: | Intel |
| Informationen: | Parallels Desktop 2.5 Build 3150.0, Copyright 2005-2007 Parallels Software International, Inc. |
| Ort: | /Applications/Parallels/Parallels Desktop.app |

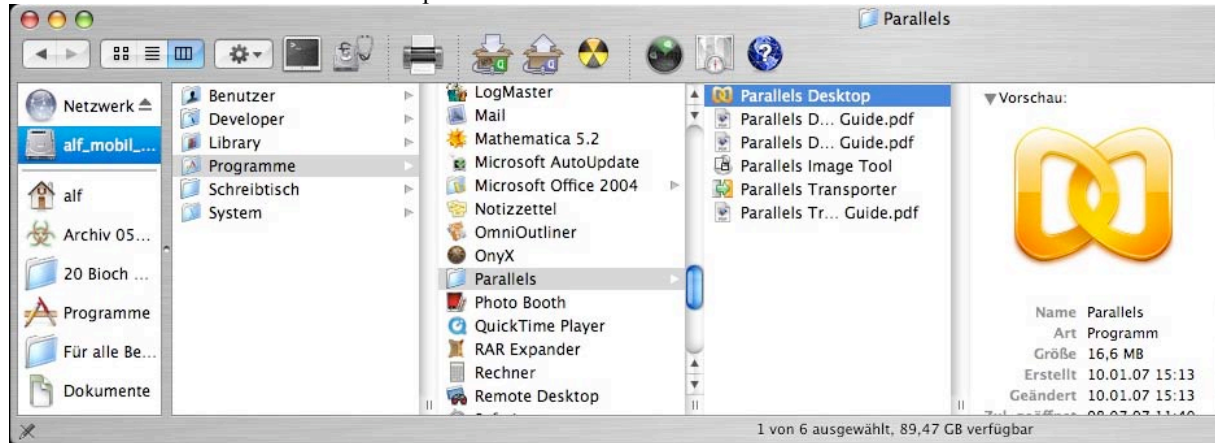
Parallels Image Tool:

| | |
|-------------------|---|
| Version: | 2.5 |
| Zuletzt geändert: | 10.01.07 15:26 |
| Art: | Intel |
| Informationen: | Parallels Image Tool 2.5 Build 3150.0, Copyright 2005-2007 Parallels Software International, Inc. |
| Ort: | /Applications/Parallels/Parallels Image Tool.app |

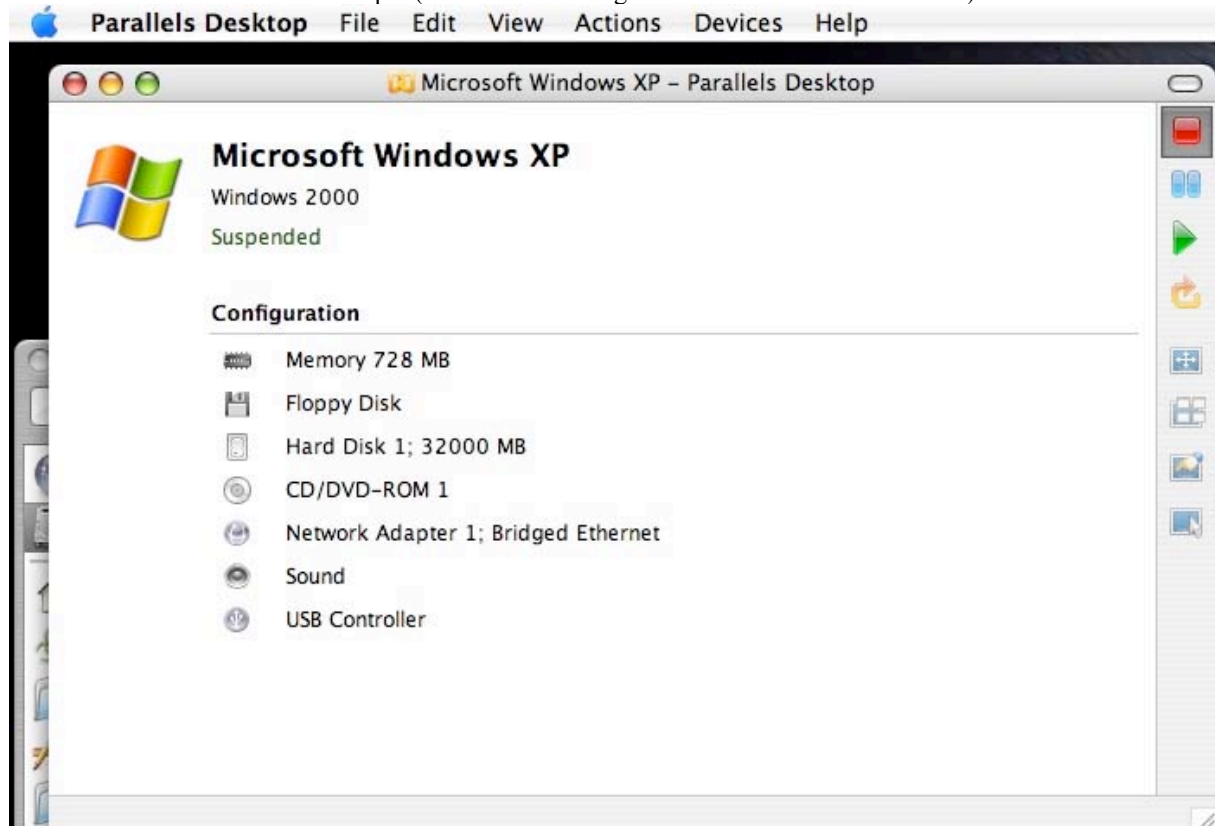
Parallels Transporter:

| | |
|-------------------|--|
| Version: | 2.0 Build 1074 |
| Zuletzt geändert: | 10.01.07 15:27 |
| Art: | Intel |
| Informationen: | Parallels Transporter 2.0 Build 1074, Copyright 2005-2006 Parallels Software International, Inc. |
| Ort: | /Applications/Parallels/Parallels Transporter.app |

Starten der Software »Parallels Desktop«



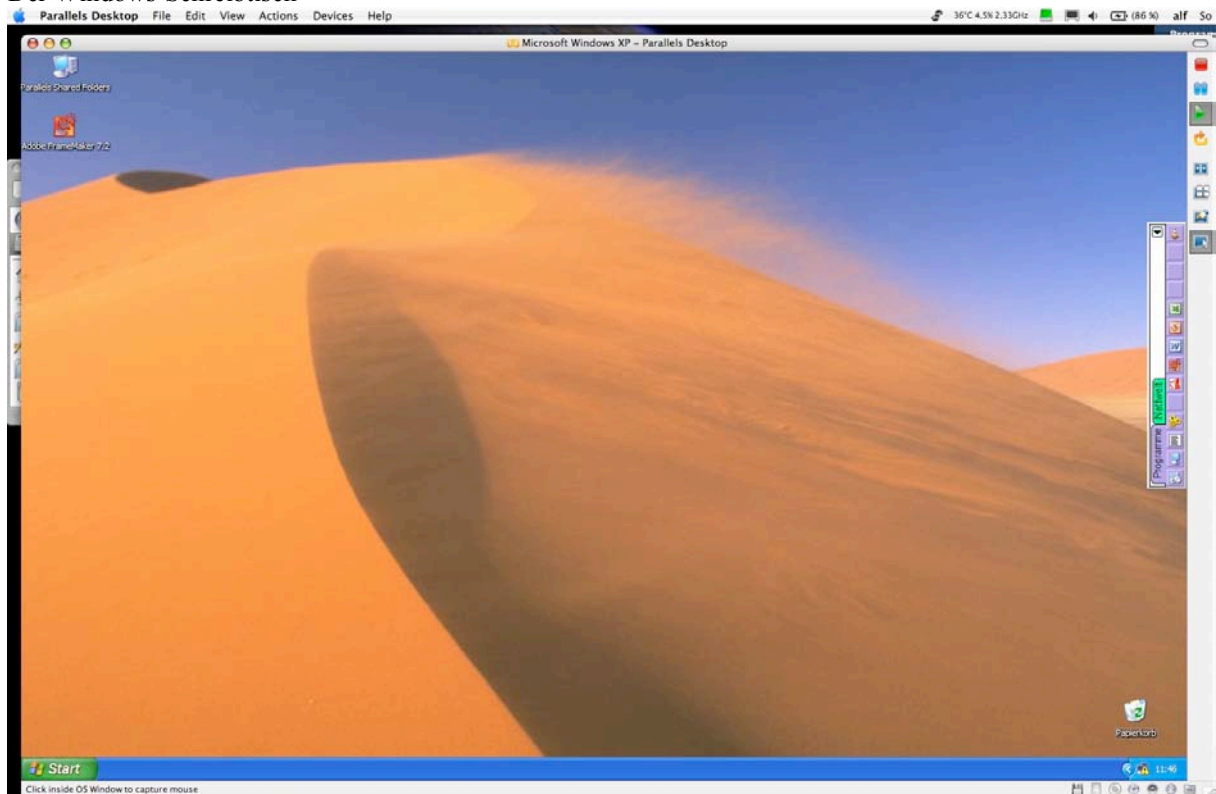
Startbildschirm » Parallels Desktop « (ein Klick auf den grünen Pfeil startet Windows XP)



Systemeigenschaften der Windows-Umgebung

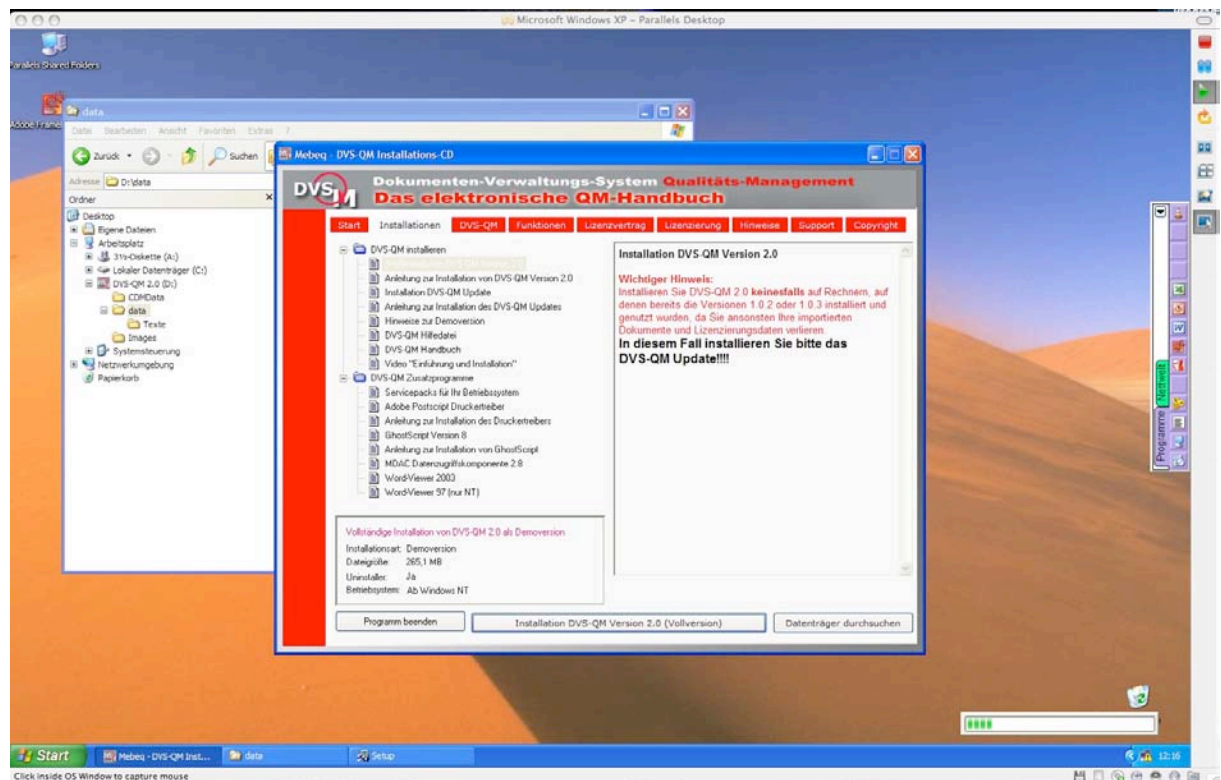
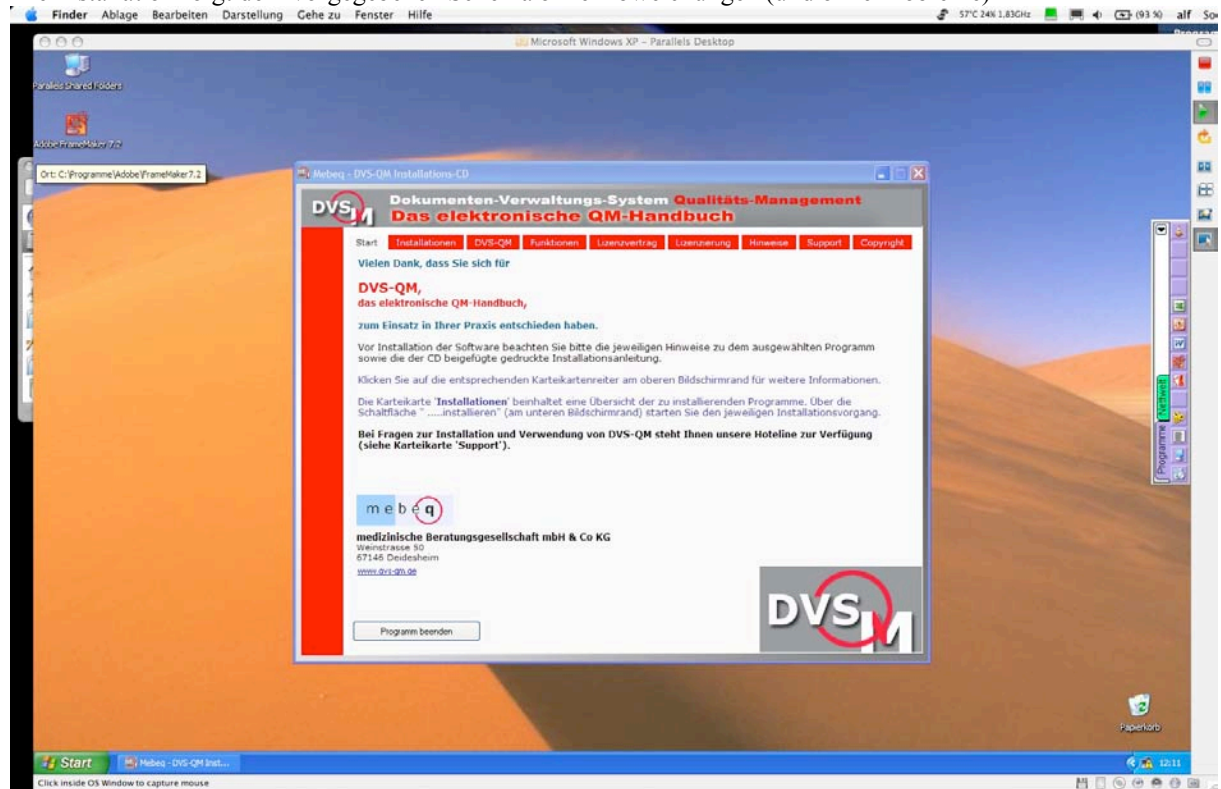


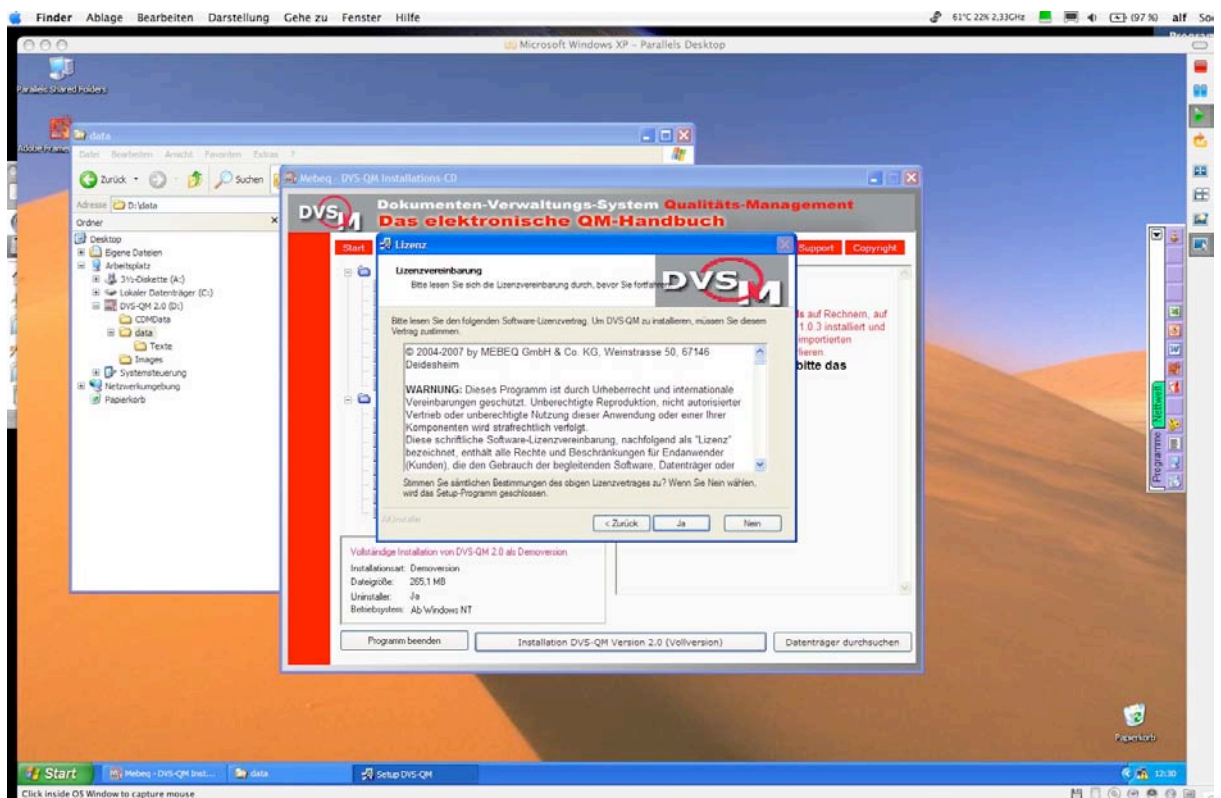
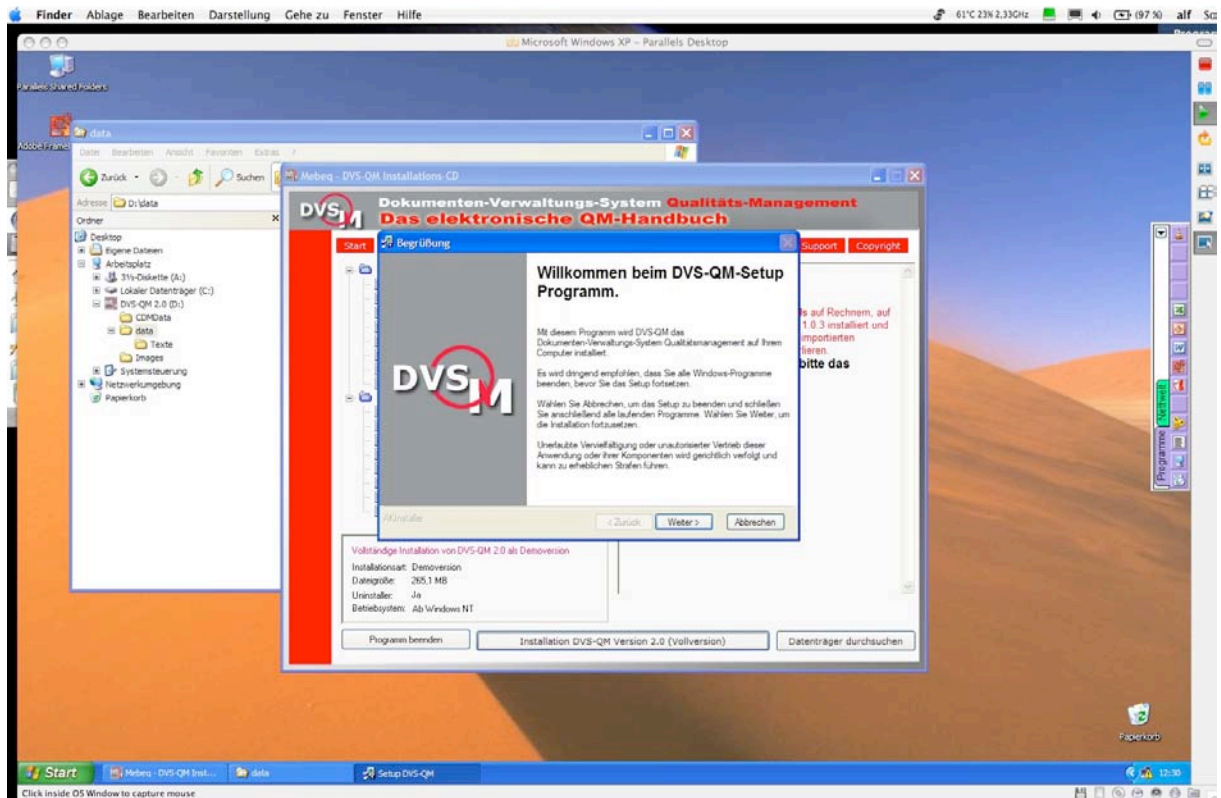
Der Windows-Schreibtisch

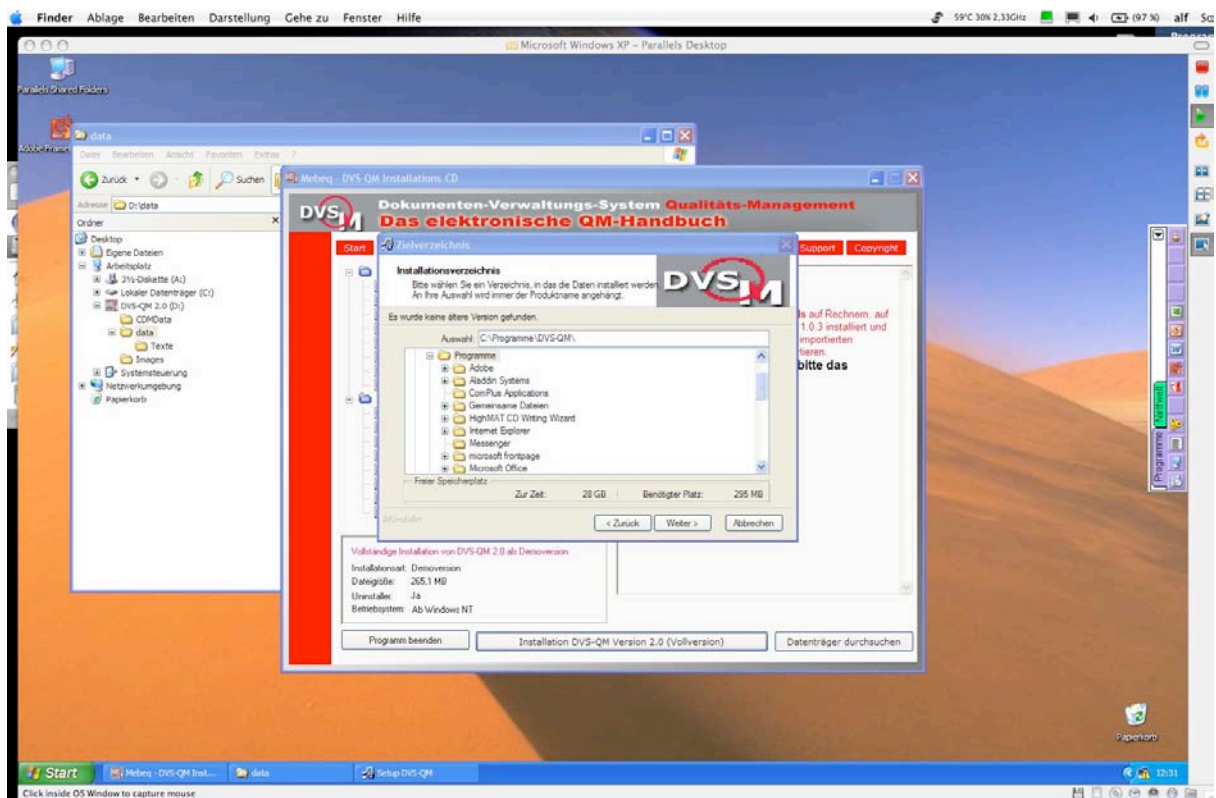
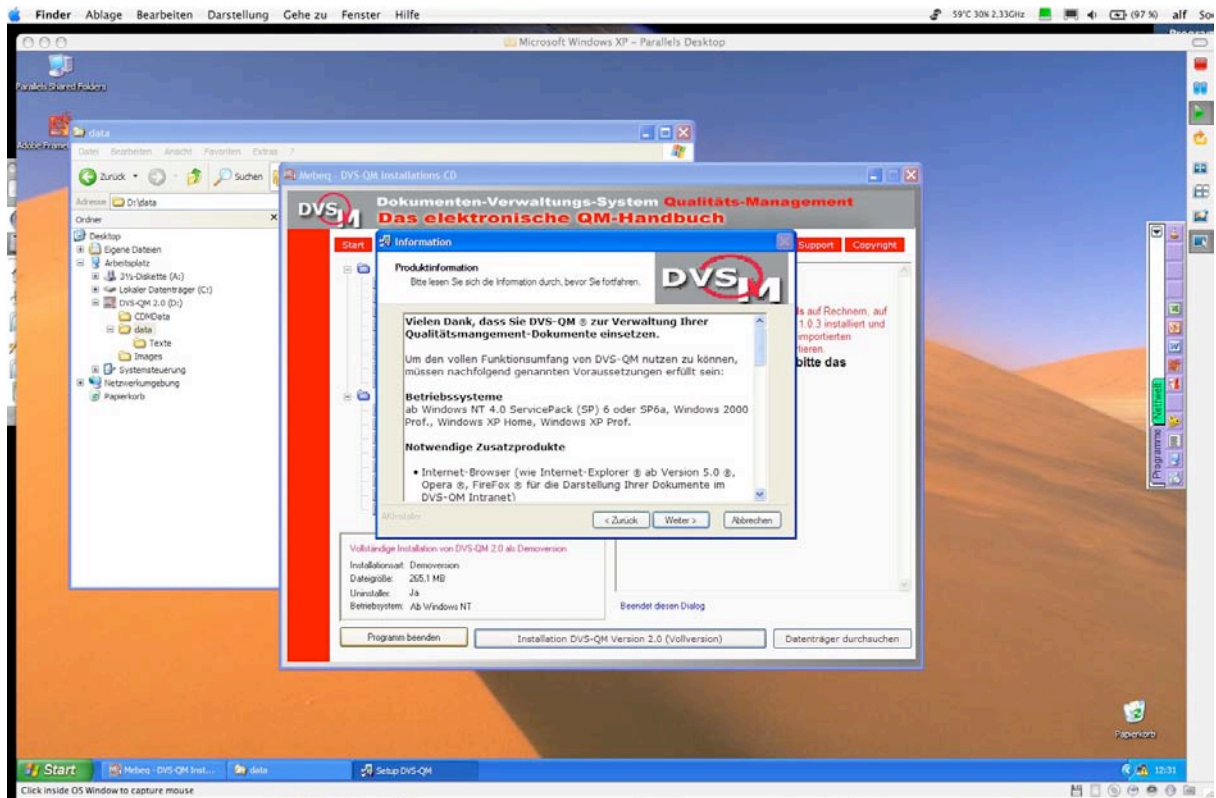


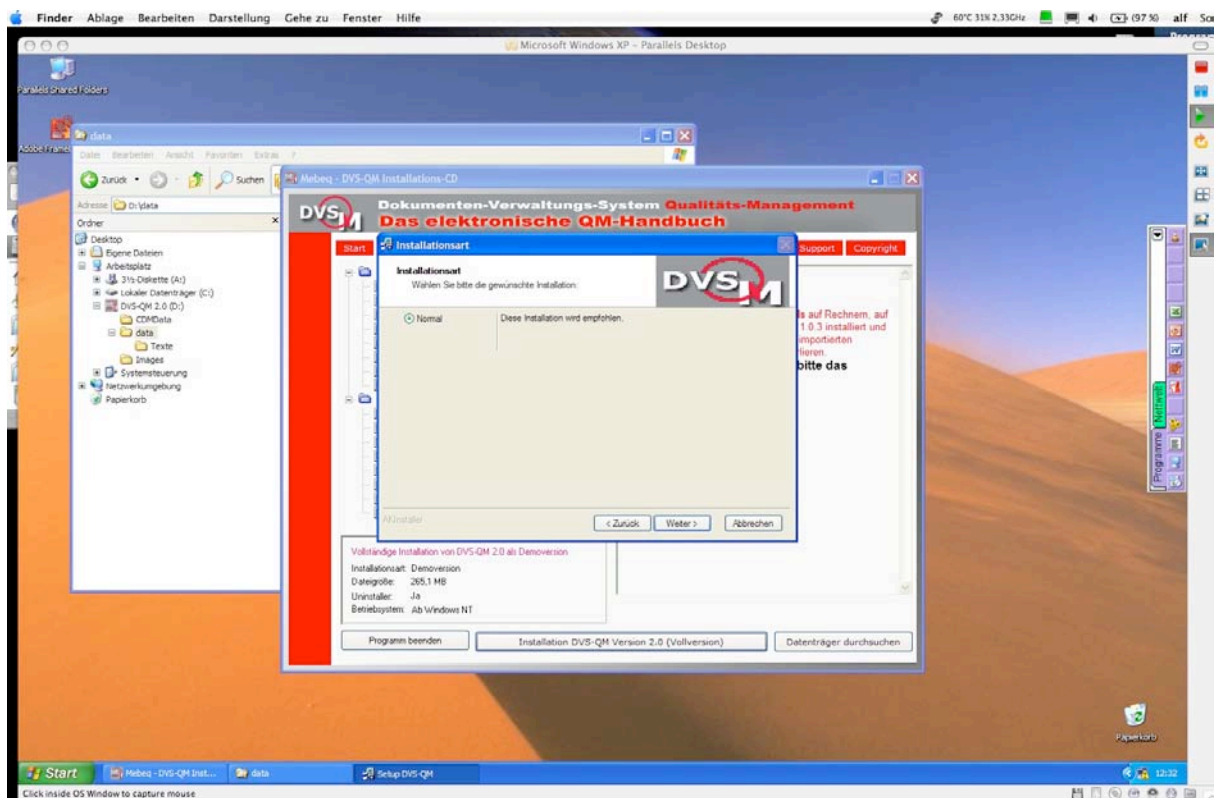
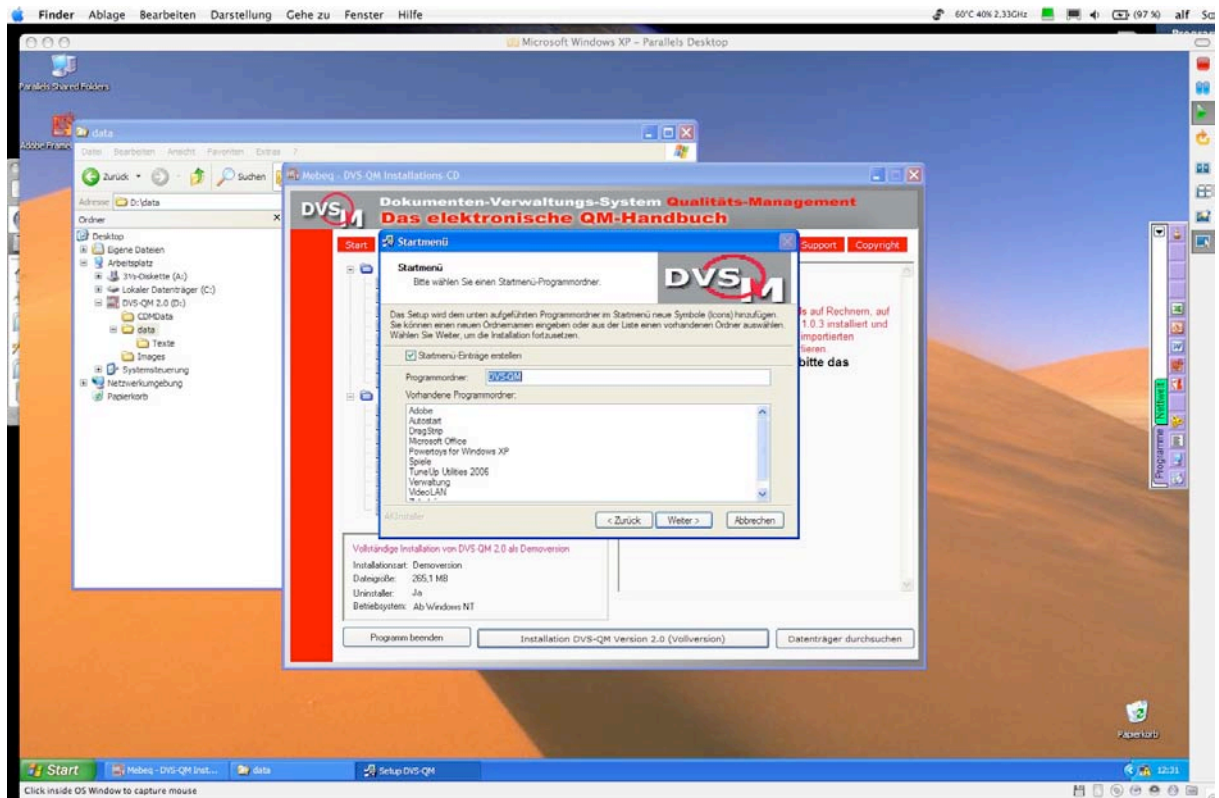
Installation des Dokumenten-Verwaltungssystems 2.0:

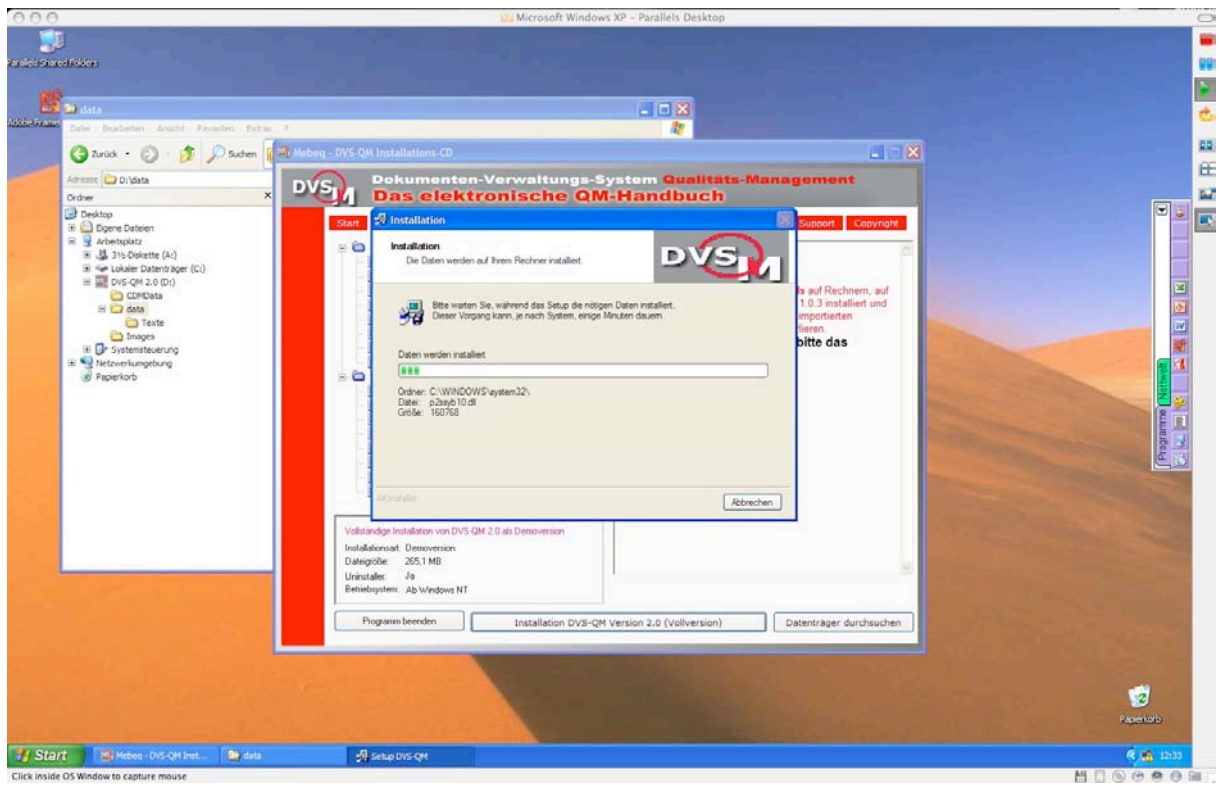
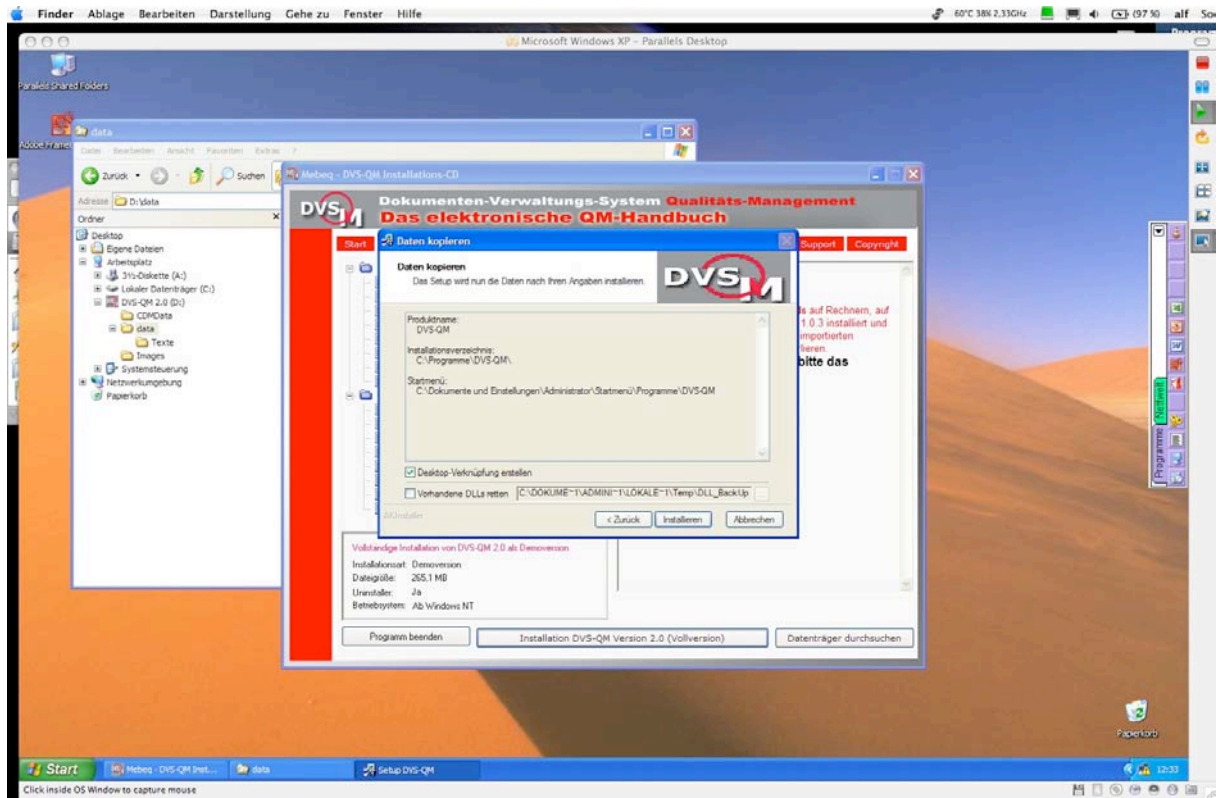
Die Installation folgt dem vorgegebenen Schema ohne Abweichungen (und ohne Probleme)

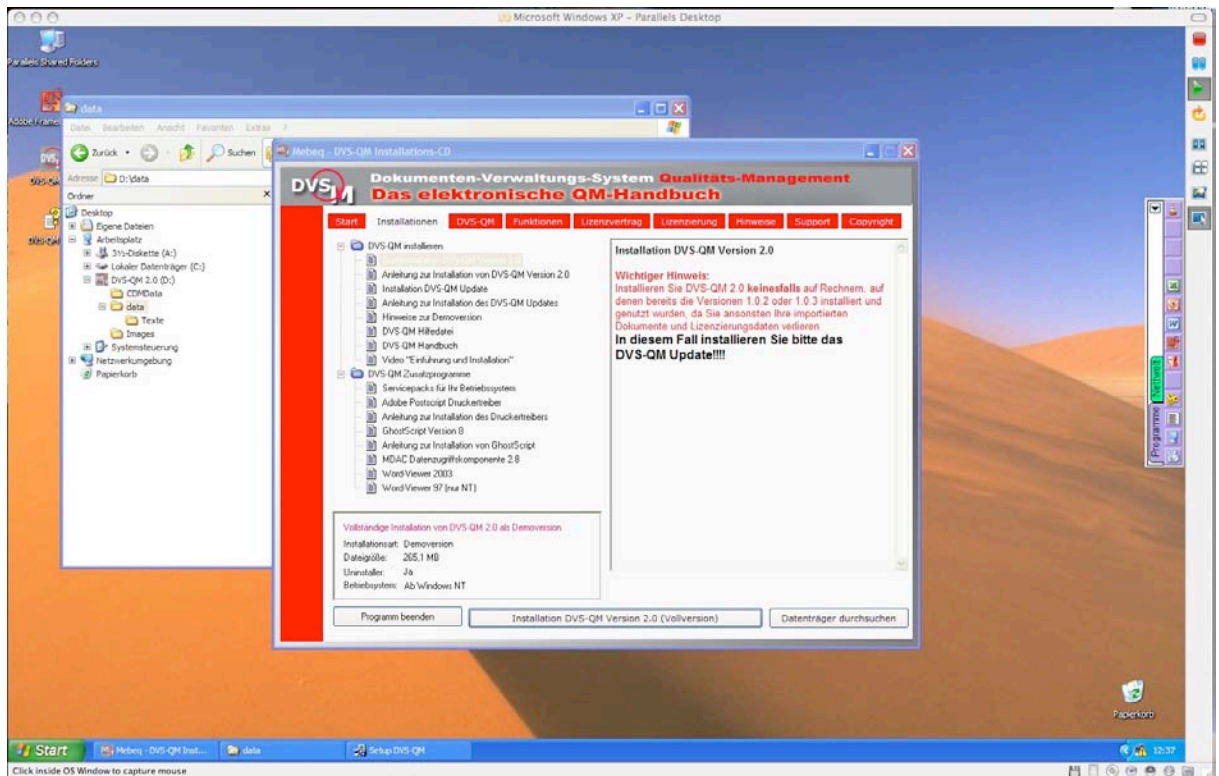
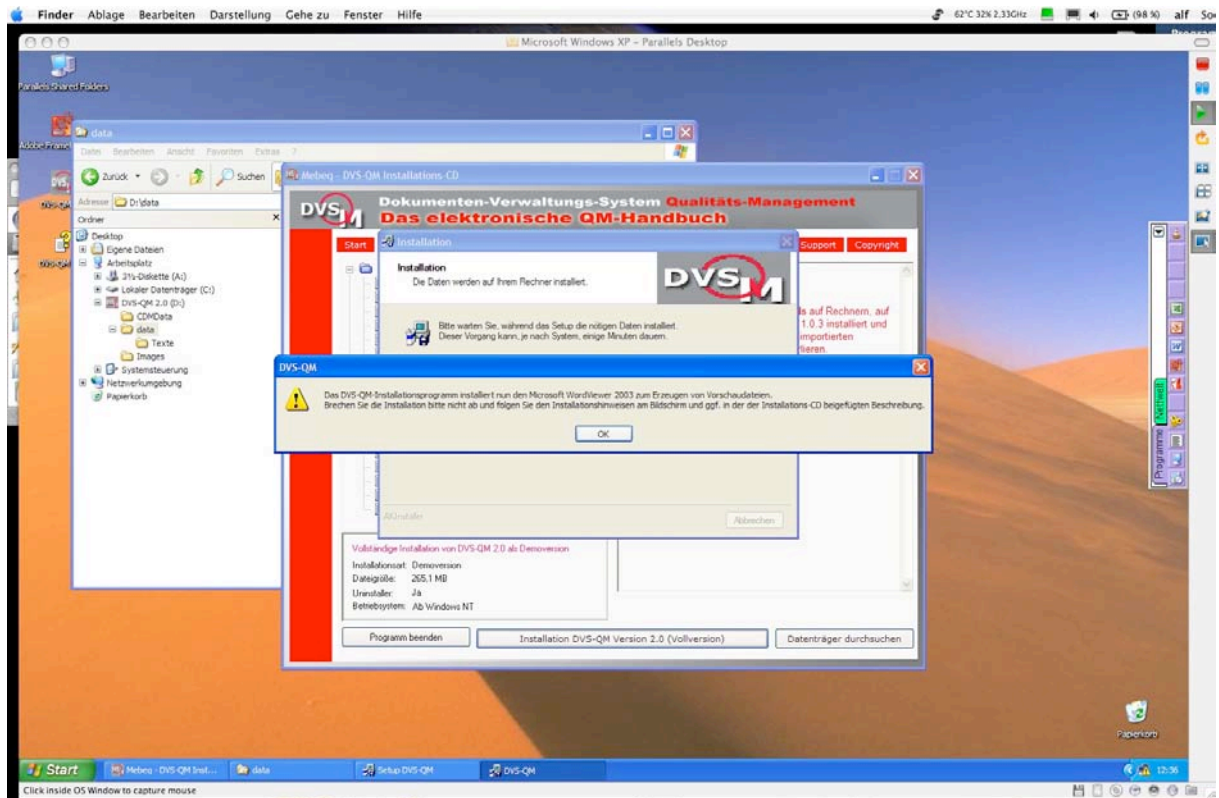


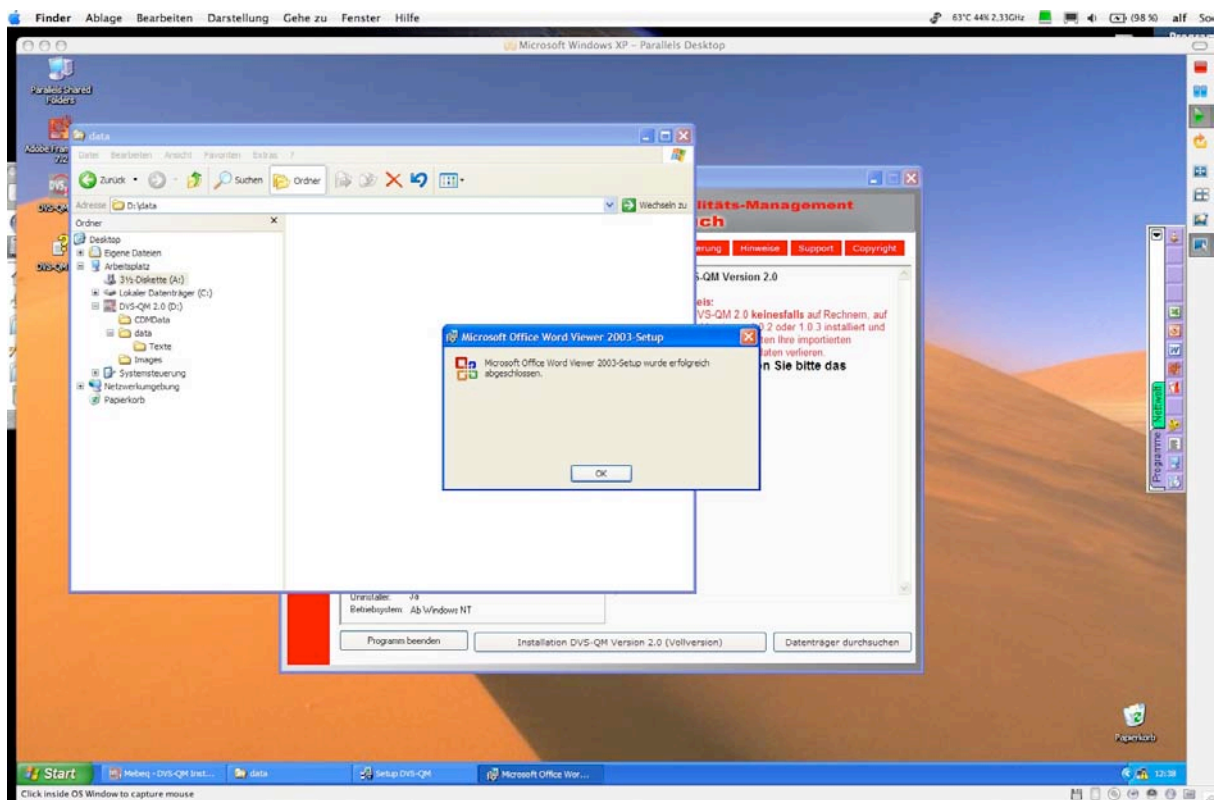
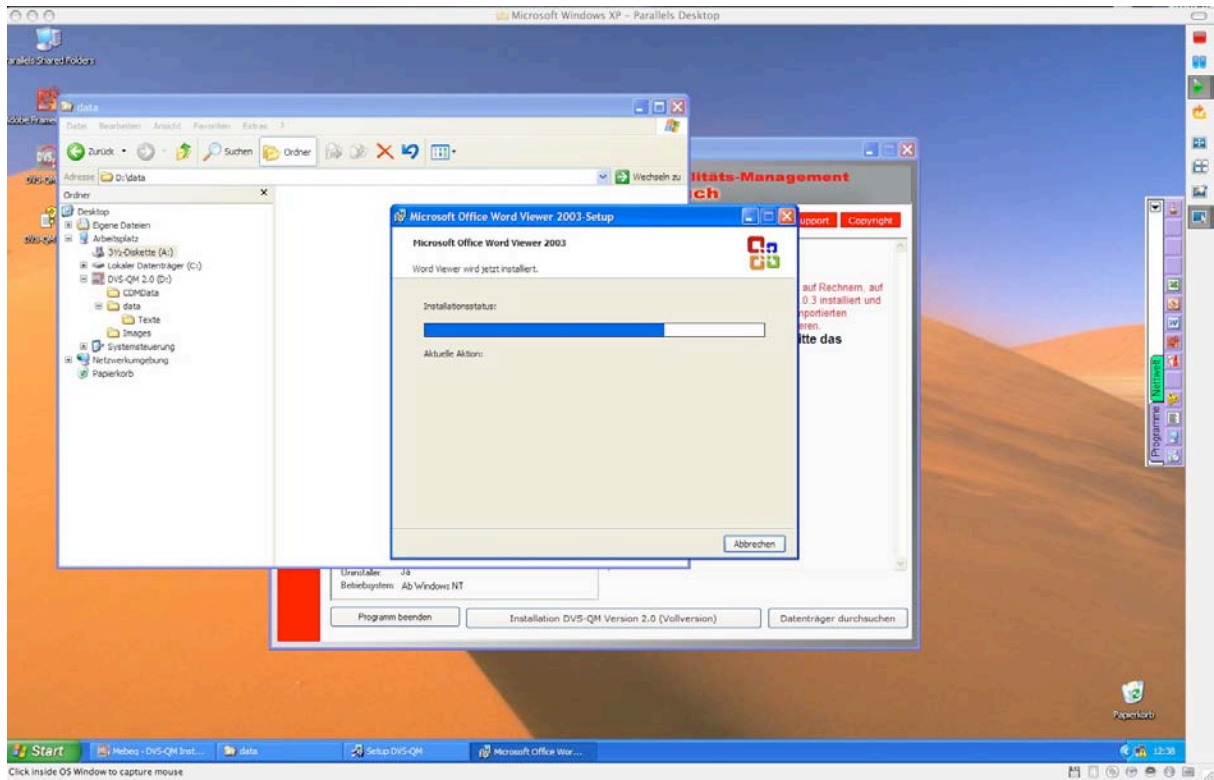


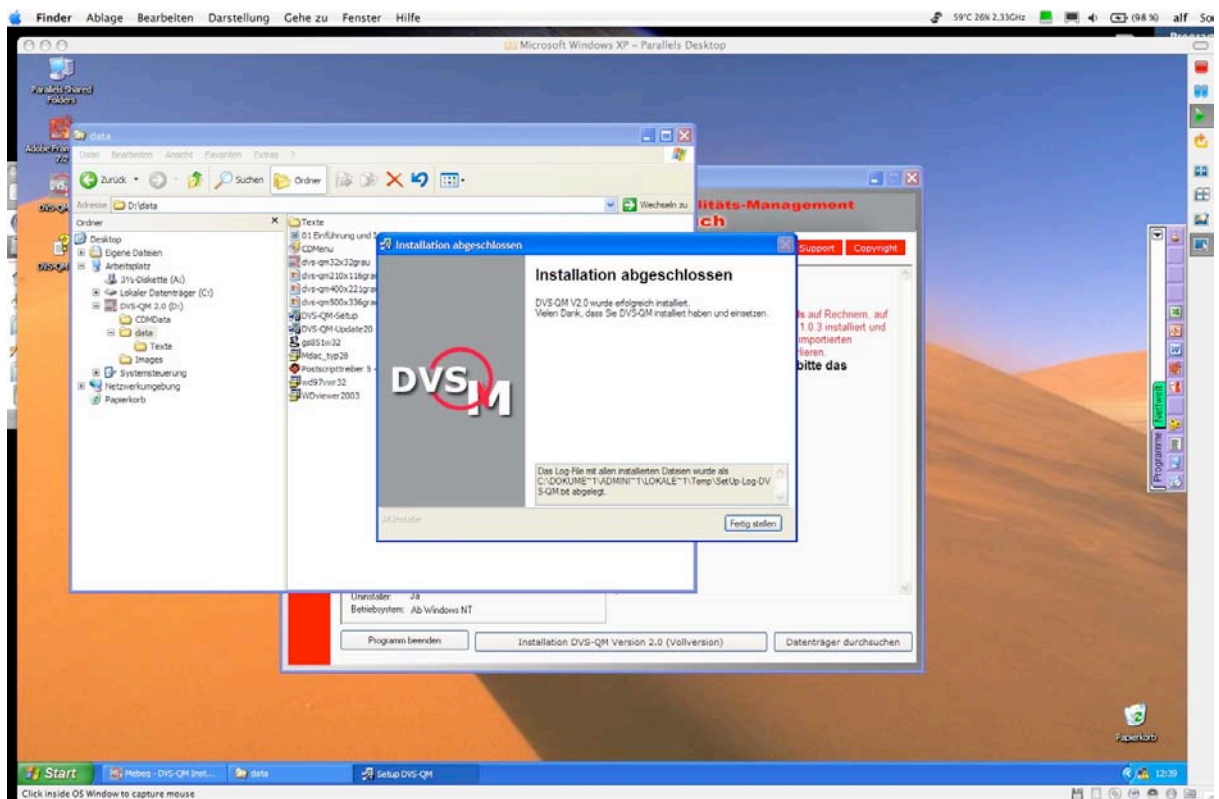
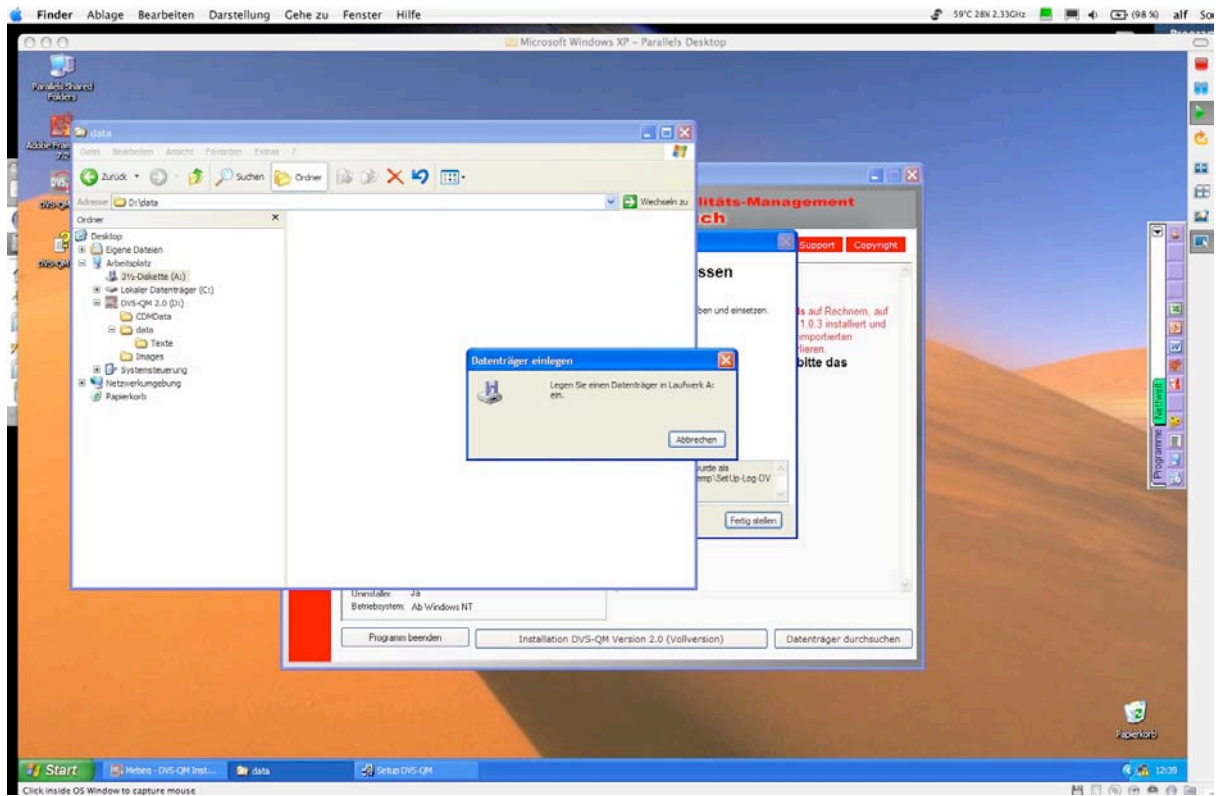


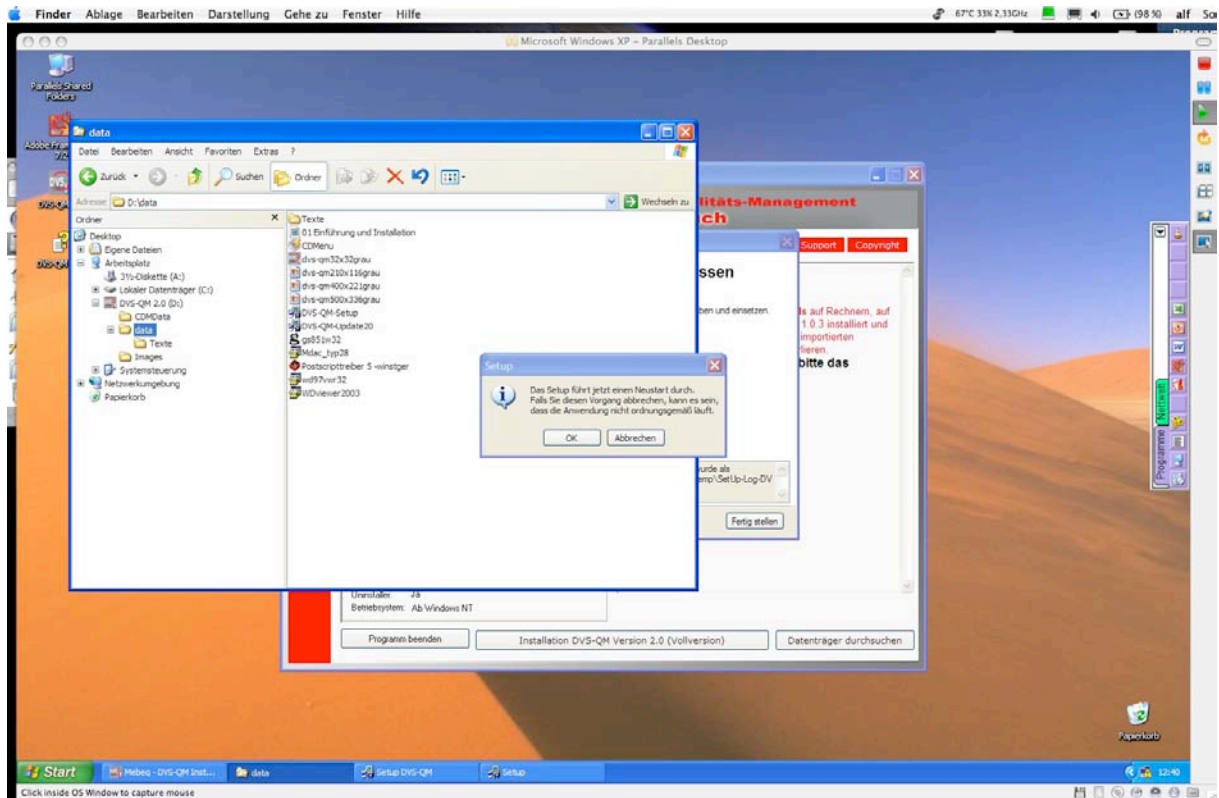




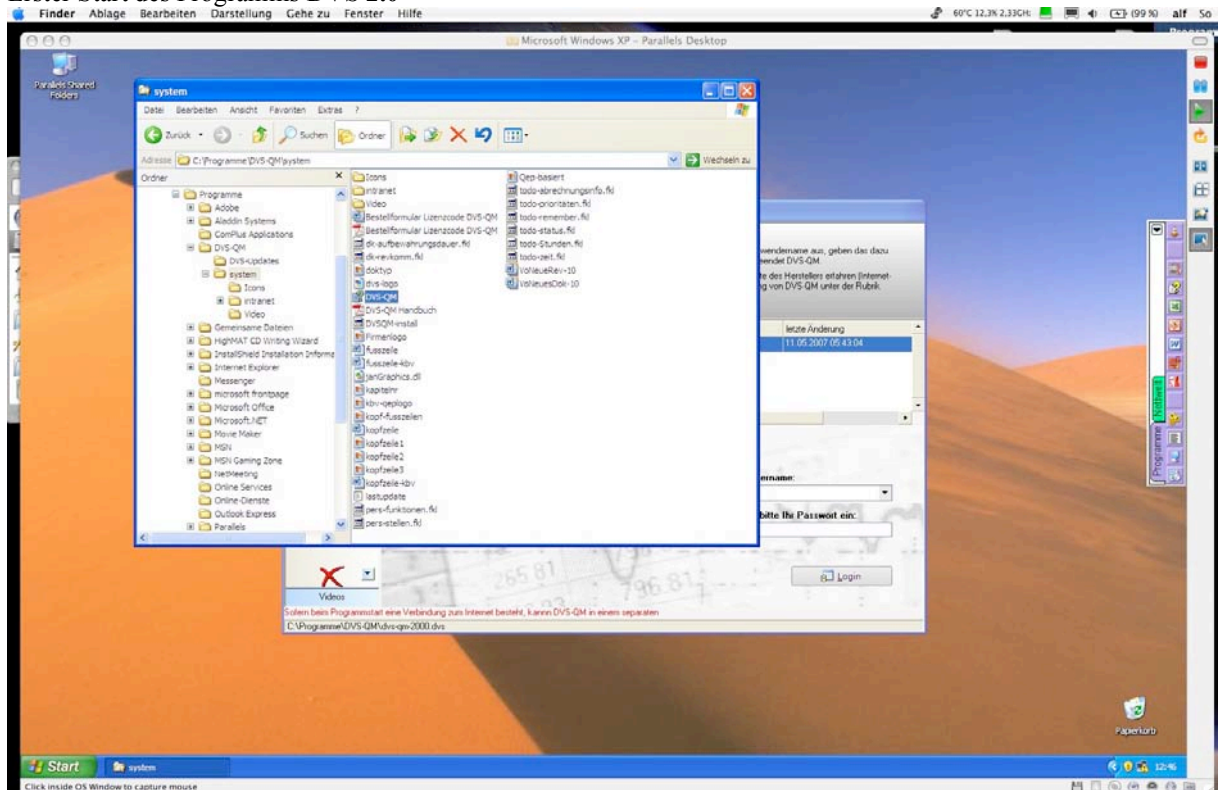


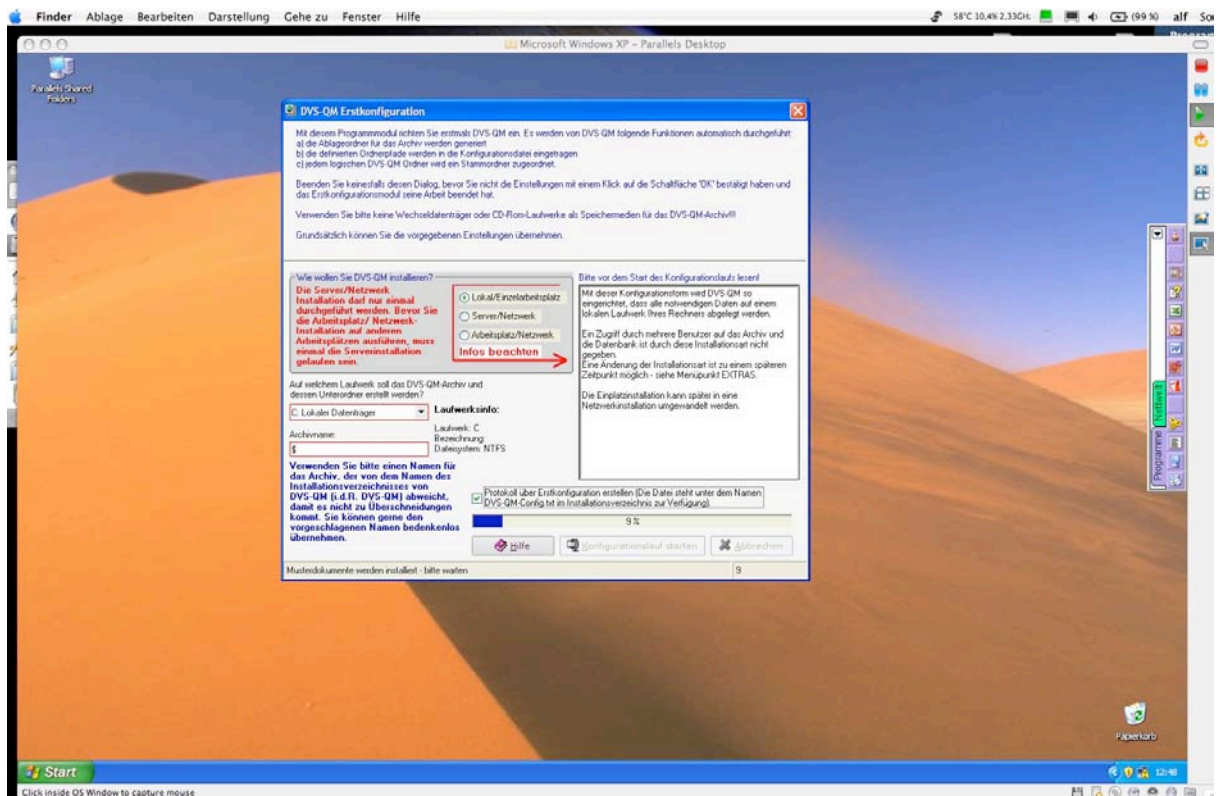
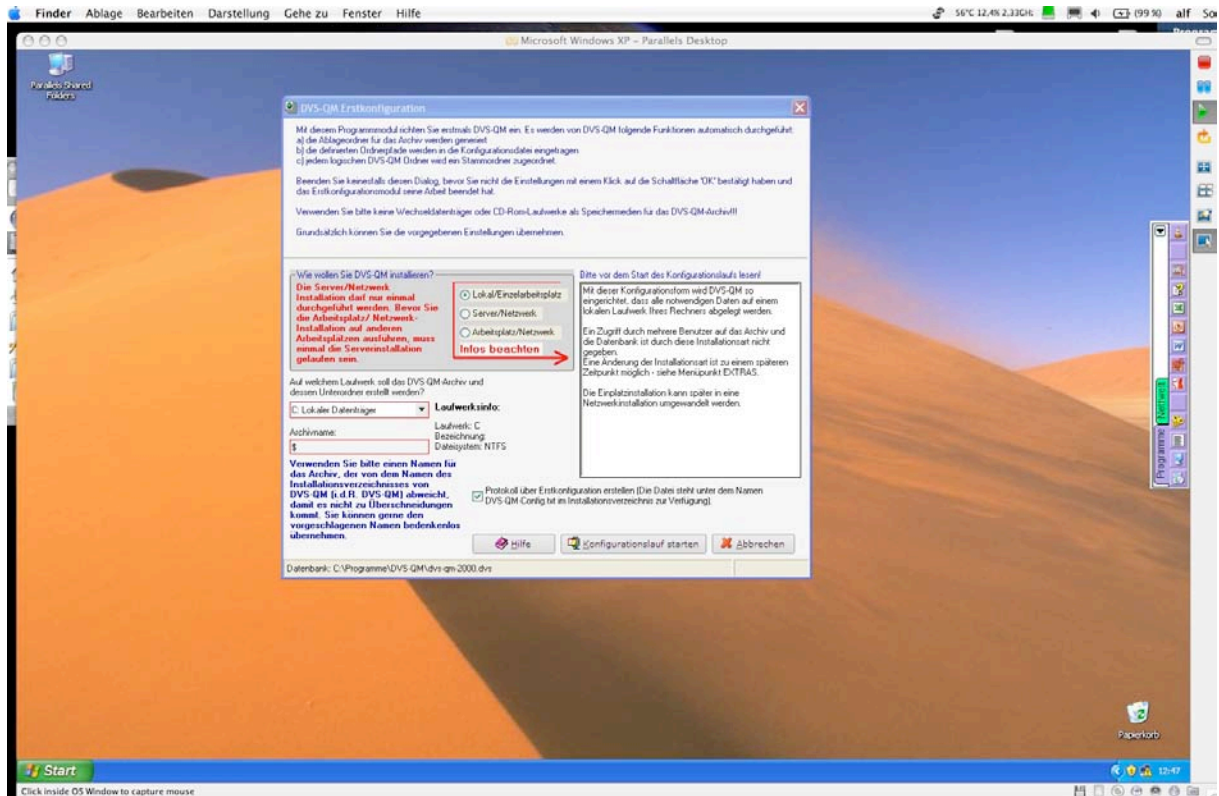


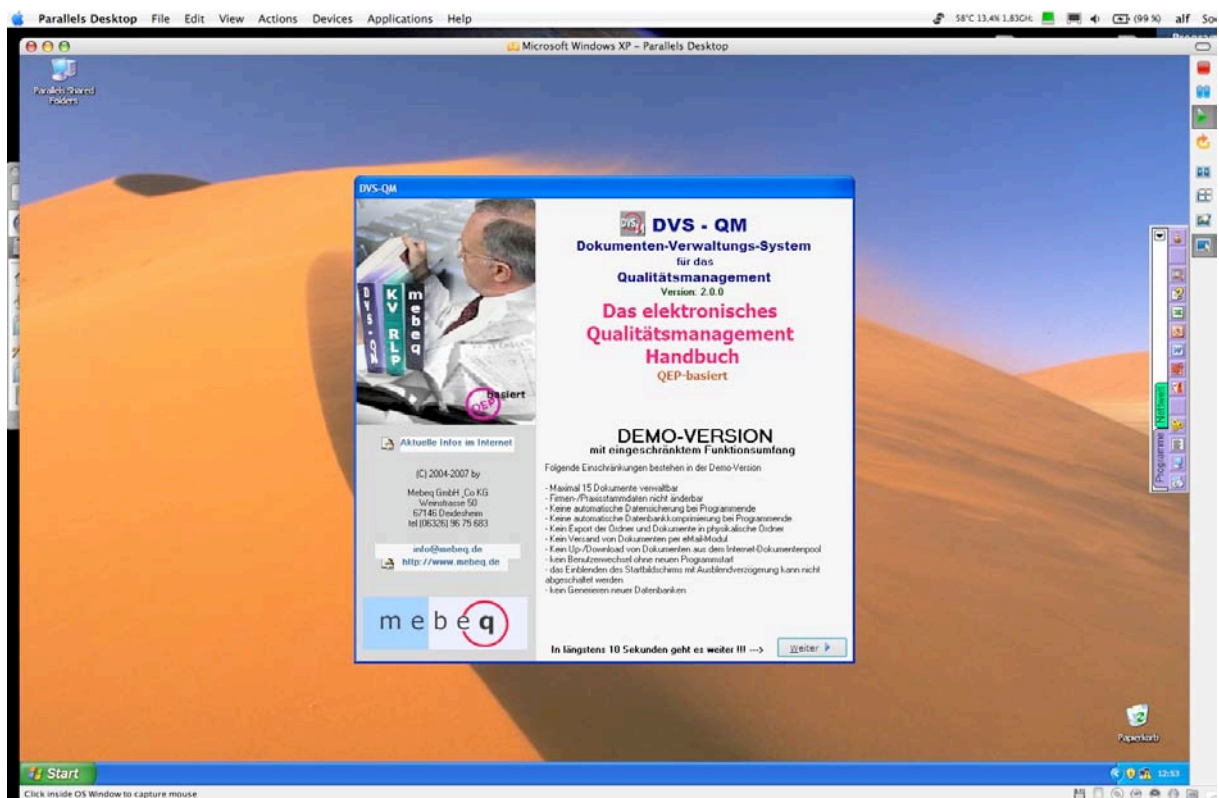
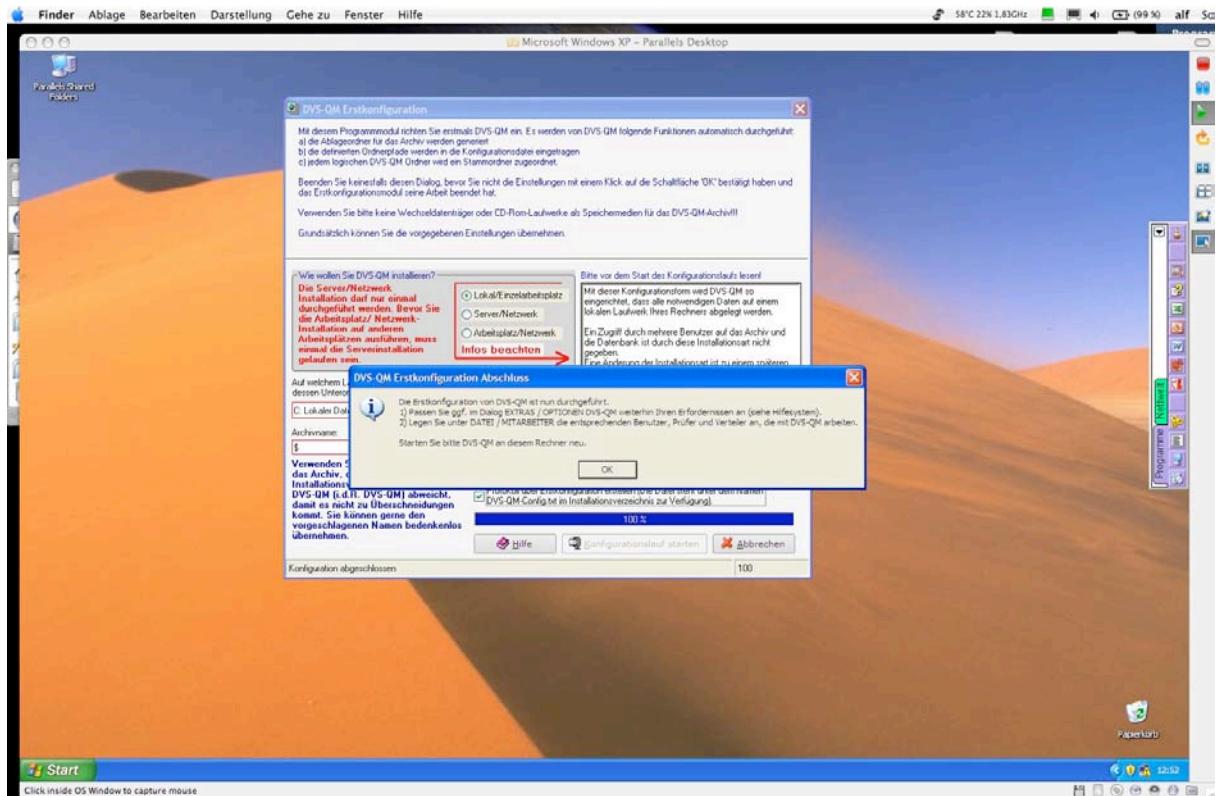


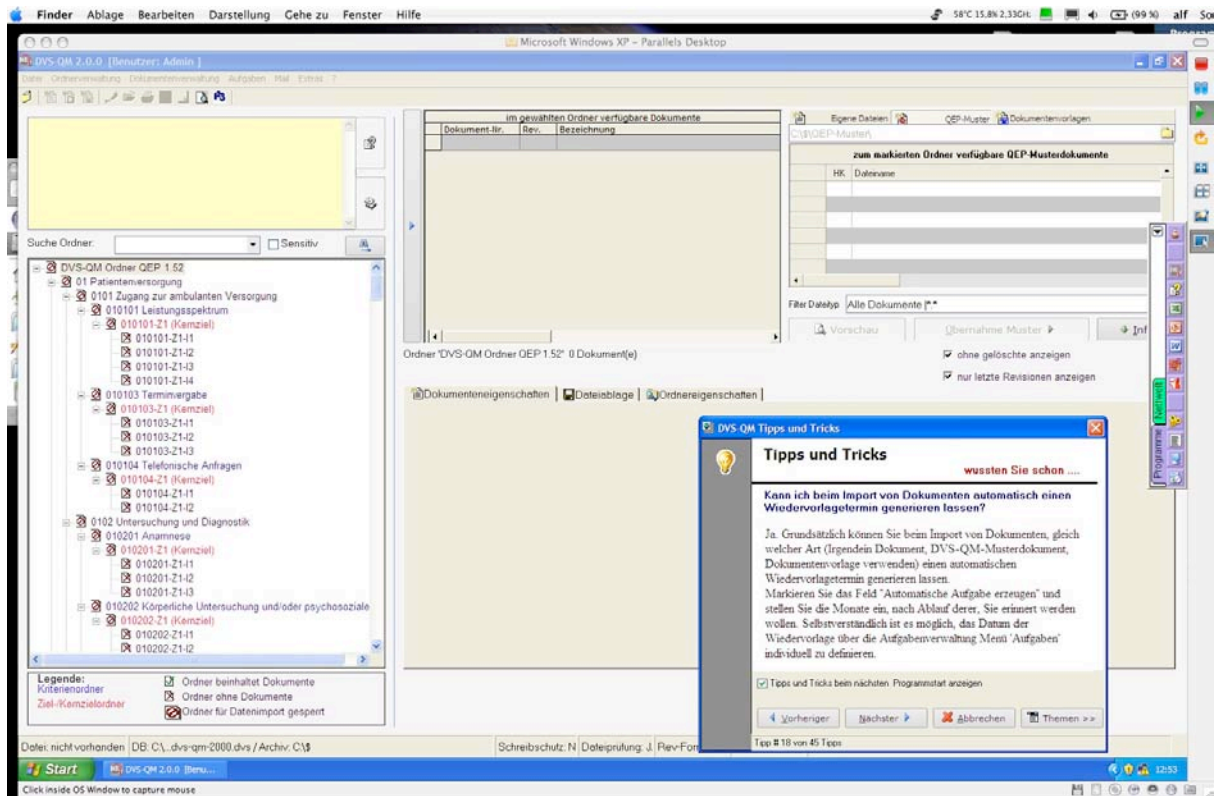


Erster Start des Programms DVS 2.0









... und los geht's